

24F WALLMOUNT

FIBRE MANAGEMENT SYSTEM (FMS)



Outdoor wall type fibre optic distribution frame is mainly used for connecting the outdoor optical cables, optical patch cords and optical pigtails. It often used for wall mounted, and facilitates the test and refit of the lines.

WallMount FMS Boxes provides mechanical & environmental protection for both fiber splicing and terminations

Features:

- Special design ensures the excess fibre cords and pigtails in good order
- FC, LC, SC, ST output interfaces optional
- Large working space to integrate the pigtail, cables and adapters
- Made of cold-rolling steel, electrostatic spraying
- Inner components as follows:
 - Fibre Optic Splice Tray: storing fibre connectors (together with the protective components) & the spare fibres
 - Fixing Device: used for fixing the fibre protective tubes, the fibre reinforced cores & the distribution pigtails
 - The brim of the box is sealed

Application:

Telecommunications
subscriber loop

Fibre to the home (FTTH)

LAN/ WAN

CATV

Specification:

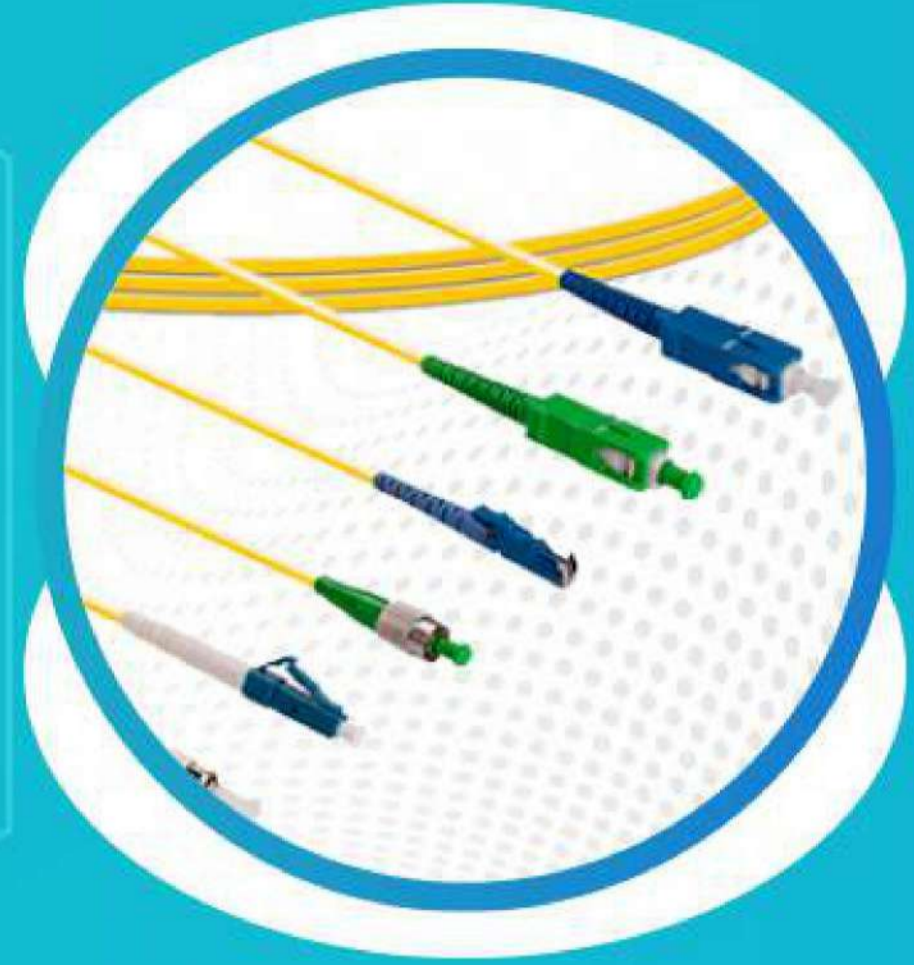
Model	Fiber Quantity	Dimension	Splice tray
ODF-OW24-S	24	349.6x330x79.8mm	2pcs



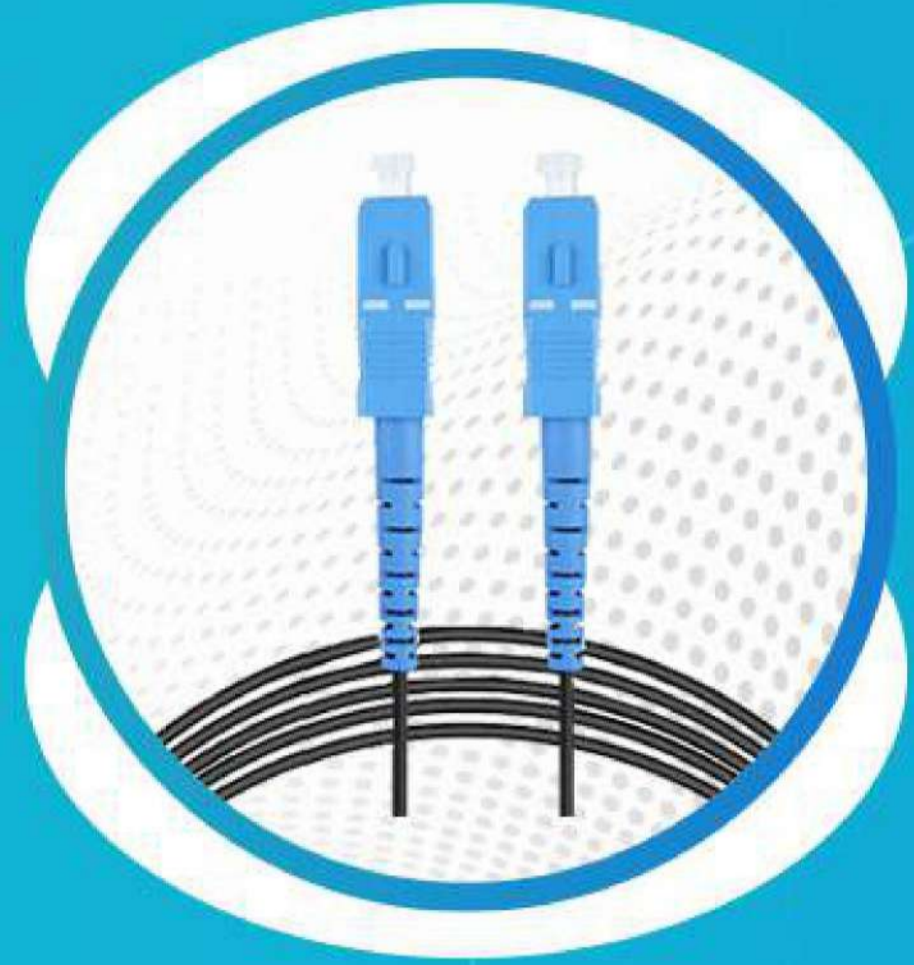
OUR CATEGORIES



FIBRE CABLES



**OPTICAL
PATCH CORD**



**FTTH
PATCH CORD**



ACCESSORIES



GPON-ONT



**HOUSING
SOLUTIONS**



R6G CABLES



SMART UPS



USB HUB



CONNECTORS



**COPPER
PATCH CORDS**



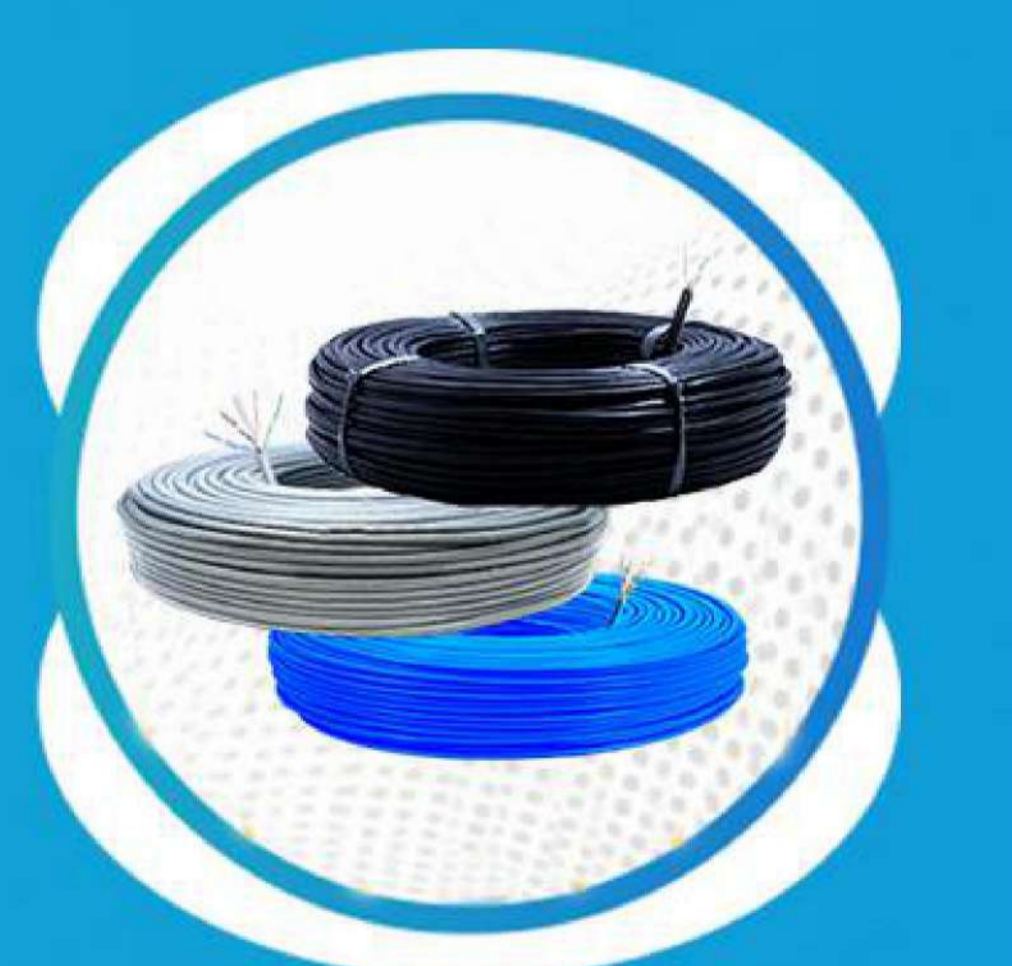
**FIBRE
PIGTAILS**



FIBRE SLEEVES



FMS



COPPER CABLES



DOME BAMBOO



**SFP
TRANSCEIVERS**

THANK YOU

Contact Us

Manufacturing Unit: 1 Vapi, Gujarat

Saibaba Infocom Pvt. Ltd.
Plot No. 67 & 70, Daman
Ganga Ind. Park, Village,
Karvad, Vapi dist.- Valsad,
Gujarat (396191)

Manufacturing Unit: 2 Coimbatore, Tamil Nadu

Saibaba Infocom Pvt.Ltd. 181,
T K Nagar, Tirampalli,
Coimbatore,
Tamil Nadu: 641033.

Corporate & Head Office: Mumbai

Synfocom Systems LLP
Prime Plaza, Behind Kalki
Fashion Store, SV Rd,
Santacruz West, Mumbai,
Maharashtra 400054